

Hydrotech® DuPont™ Styrofoam™ Insulation ST-100



BUILDING TRUST



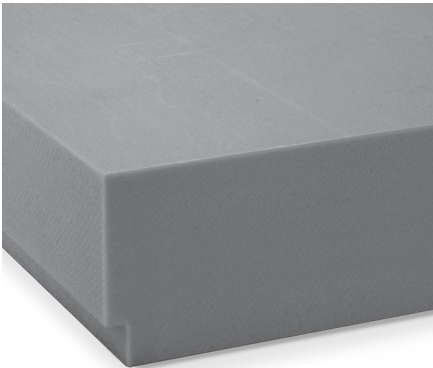
formerly known as DuPont™ Styrofoam™ Insulation ST-100

GENERAL DESCRIPTION

Styrofoam brand insulation is a closed cell, rigid plastic, extruded polystyrene foam insulation. Roofmate™ ST-100**, Plazamate™ ST-100, and High Load ST-100 materials long, bottom edges are rabbeted producing channels on the underside of the boards. The Styrofoam ST-100 products are dark gray in color (differing from the legacy blue) and manufactured to comply with new reduced global warming potential (GWP) requirements.

BASIC USE

Styrofoam brand insulation is designed for use in roof, wall and foundation insulation applications in new or retrofit commercial structures. Styrofoam Roofmate™ ST-100 is intended for use on top of roofing/waterproofing membranes in ballasted IRMA/PMR (Inverted Roof Membrane Assembly/Protected Membrane Roof) applications. Styrofoam Plazamate™ ST-100 and HighLoad boards are intended for use above roofing/waterproofing membranes in roof, plaza or parking deck applications where high compressive strength is required.



PRODUCT INFORMATION

Styrofoam brand insulation is available in panels 24 inches wide X 96 inches long in thicknesses of 1 inch to 4 inches depending on the product type.

NOTES

- PM/HL40/HL100 - not available in 1"
- HL40/HL60 - available in 48" W
- PM - available in 1.5" (special order)
- HL60 - available in 1" (special order)
- HL100 - available in 1.5" & 2" ONLY

See technical data on page 2.

LEED® INFORMATION

	Credit 4	Credit 5
Recycled Content (% by weight)	20 (pi)	
Manufacture Location	Contact Hydrotech for project specific information	
Extraction/Harvesting Location	Contact Hydrotech for project specific information	

TECHNICAL DATA

PROPERTY	TEST METHOD	ROOFMATE/HI40	PLAZAMATE/HI60	HIGH LOAD 100	SQ/EDGE
THERMAL RESISTANCE ¹					
Aged R-value/inch @ 75°F mean. temp., ft ² *hr*°F/Btu, (M ² *K/w)	ASTM C518	5.0 (0.88)	5.0 (0.88)	5.0 (0.88)	5.0 (0.88)
COMPREHENSIVE STENGTH ² psi, (kPa), min.	ASTM D1621	40 (276)	60 (413)	100 (689)	25
WATER ABSORPTION % by volume, max.	ASTM C272	0.3	0.1	0.1	0.1
WATER VAPOR PERMEANCE ³ perm, (ng/(Pa*s*m ²))	ASTM E96	1.0 (57)	0.08 (45.8)	0.08 (45.8)	1.5
MAXIMUM USE TEMPERATURE °F, (°C)	--	165 (74)	165 (74)	165 (74)	165
LINEAR COEFFICIENT OF THERMAL EXPANSION in./in.*°F, (mm/mm*°C)	ASTM D696	3.5 X 10 ⁻⁵	3.5 X 10 ⁻⁵	3.5 X 10 ⁻⁵	3.5 X 10 ⁻⁵
FLEXURAL STRENGTH psi, (kPa), min.	ASTM C203	60 (413)	75 (517)	100 (689)	50 (345)
SURFACE BURNING CHAR. FOR BOTH FOAM CORE & FINISHED PRODUCT	ASTM E84	Class A	Class A	Class A	Class A
FLAME SPREAD ⁴	ASTM E84	15	25	25	N/A
SMOKE DEVELOPED	ASTM E84	165	165	165	165

1. R-values are consistent with criteria of ASTM C578 and the requirements of the FTC R-value rule (16 CFR Part 460)

2. Vertical compressive strength is measured at 10 percent deformation or at yield, whichever occurs first.

3. Values based on 1" thickness.

4. These numerical flame spread and smoke developed ratings are not intended to reflect hazards presented by this or any other material under actual fire conditons.

* trademark of DuPont

** ST-100 is a temporary designation for the dark gray Styrofoam products that comply with the new reduced global warming potential (GWP) requirements until the full transition is complete. All physical properties remain the same between the ST-100 gray Styrofoam products and the legacy blue Styrofoam products.

The reduced Global Warming Potential (GWP) Styrofoam™ Brand XPS Products contain residual levels of a blowing agent that will slowly diffuse out of the foam over an extended period of time. Ventilation is required to ensure that the vapor released by the foam does not accumulate and reach a flammable concentration. Reduced GWP Styrofoam™ Brand XPS Products are not classified as hazardous materials. However, all transportation methods, storage, fabrication, and downstream scrap and waste processing should incorporate adequate ventilation to prevent accumulation of vapor.

*Trademark of the DuPont Chemical Company

Prior to each use of any product of Sika Corporation, its subsidiaries or affiliates ("SIKA"), the user must always read and follow the warnings and instructions on the product's most current product label, Product Data Sheet and Safety Data Sheet which are available at usa.sika.com or by calling SIKA's Technical Service Department at 1-800-933-7452. Nothing contained in any SIKA literature or materials relieves the user of the obligation to read and follow the warnings and instructions for each SIKA product as set forth in the current product label, Product Data Sheet and Safety Data Sheet prior to use of the SIKA product.

SIKA warrants this product for one year from date of installation to be free from manufacturing defects and to meet the technical properties on the current Product Data Sheet if used as directed within the product's shelf life. User determines suitability of product for intended use and assumes all risks. User's and/or buyer's sole remedy shall be limited to the purchase price or replacement of this product exclusive of any labor costs. **NO OTHER WARRANTIES EXPRESS OR IMPLIED SHALL APPLY INCLUDING ANY WARRANTY OF MERCHANTABILITY OR FITNESS FOR A PARTICULAR PURPOSE. SIKA SHALL NOT BE LIABLE UNDER ANY LEGAL THEORY FOR SPECIAL OR CONSEQUENTIAL DAMAGES. SIKA SHALL NOT BE RESPONSIBLE FOR THE USE OF THIS PRODUCT IN A MANNER TO INFRINGE ON ANY PATENT OR ANY OTHER INTELLECTUAL PROPERTY RIGHTS HELD BY OTHERS.**

Sale of SIKA products are subject to the Terms and Conditions of Sale which are available at <https://usa.sika.com/en/group/SikaCorp/termsandconditions.html> or by calling 1-800-933-7452.

Sika Corporation • Roofing & Waterproofing 100 Dan Road, Canton, MA 02021 USA • (888) 509-3350 • 1/25