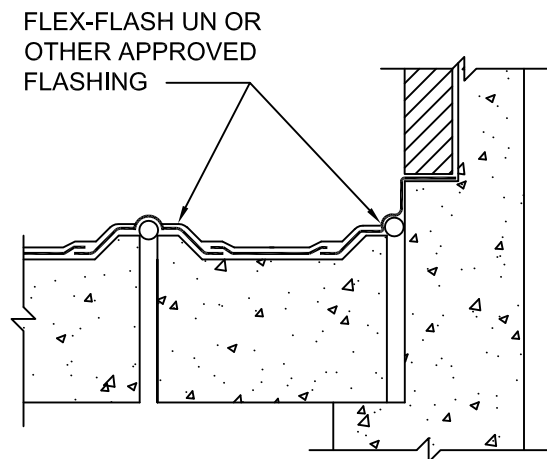


EXPANSION JOINTS UP TO 1" IN WIDTH AND MAX. 25% MOVEMENT ACCOMMODATION FACTOR (REF. DETAIL W-6A)



EXPANSION JOINTS 1" TO 2" IN WIDTH AND MAX. 25% MOVEMENT ACCOMMODATION FACTOR (REF. DETAIL W-6A)

NOTES: FOR EXPANSION JOINTS GREATER THAN 2", EXPANSION JOINTS ANTICIPATING GREATER THAN 25% MOVEMENT ACCOMMODATION FACTOR AND FOR SEISMIC EXPANSION JOINTS, THE USE OF PRE-FABRICATED, PROPRIETARY JOINT SYSTEMS SHOULD BE CONSIDERED. (REF. DETAILS W-6D)

Monolithic Membrane 6125-FR
WATERPROOFING SYSTEMS

AMERICAN HYDROTECH, INC.

GENERAL CONCRETE CRACK AND JOINT TREATMENT

SCALE: NONE DATE: 11/01/17	W-3
-------------------------------	-----

This information is intended only for general conceptual purposes. It is based on data and knowledge considered to be true and correct. It is offered for the user's consideration, investigation and verification and is not intended to substitute for the advice provided by appropriate professionals. Hydrotech assumes no liability for the use of this information. The determination of the suitability and applicability of this information is the sole responsibility of the user.