



## Forma Modular Planters & Planter Walls

With a simple and straightforward design and installation process, these modular planters and planter walls are ideal for on-structure applications such as amenity decks, green roofs, and edge restraints for low-profile planting areas.

Available in powder coated aluminum or weathering steel. Forma products are 6" – 48" tall and available in straight, curved, and angled configurations.

Forma products available in freestanding or anchored options. Multiple assemblies can be fastened together for extended lengths with a nearly seamless appearance. Products can be adapted to work with other standard planters or site furnishings, site amenities or custom features

The modular design and metal construction enables it to be customized to fit your specific space constraints and visual aesthetic.



**Marketed by Sika Corporation - Contact for further DETAILS and PRICING**

100 Dan Road, Canton, MA 02021 • (800) 877-6125  
usa.sika.com/roofing • hydrotechusa.com



## Process

### STANDARD COMPONENTS

Start with standard shapes, sizes, materials, and finishes as the basis of design for numerous layouts and designs. Available up to 96”L and 48”H in straight, curved, or sloped designs. Numerous standard options are available to provide turn key solutions.

### CUSTOM

Forma products are easily customizable in nearly any aspect. We will gladly help customize Forma products to meet your site and project needs. We can easily work with an existing design and layout and provide design guidance and fully custom options.

## Shapes

### STRAIGHT

Available in 6” - 48”H level or sloped top. Standard lengths 4’,6’,8’L.



**Straight**



**Modular Planter**

### MODULAR PLANTERS

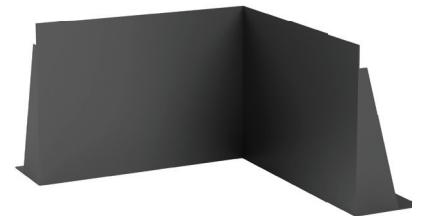
Rectangle or curved full bottom planters with drain holes, Height 12”- 48” and 12”+ W. Standard sizes up to 8’L.

### CURVE

Available in any radius greater than 10”. Standard sizes starting at 24” R.



**Curve**



**Corner**

### CORNER

Available in any angle greater than 30°. Fully welded or formed joint.



18” freestanding wall with bench topper shown



**Marketed by Sika Corporation - Contact for further DETAILS and PRICING**

100 Dan Road, Canton, MA 02021 • (800) 877-6125

usa.sika.com/roofing • hydrotechusa.com



## Materials

### TESTED

Standard and custom products are analyzed using model stress analysis to ensure they will handle the specified duty and prevent oil canning and straightness. Optional stamped engineering drawings available on request.

### THICKNESS

Material thickness varies .125" to .250" based on height and planter size to ensure adequate rigidity and minimize deflection based on product model stress tests. Stiffeners and bracing are calculated and added as needed for steel and aluminum needs.

### WEATHERING STEEL

Built from A606/A588 weathering steel, Forma walls and modular planters are built to withstand the most demanding conditions. Products are made from recycled content and fully recyclable. Finish steps include abrasive sanding, degreasing,

and optional finishes. Optional finishes include preweathering and/or boiled linseed oil finish for a satin feel and rich deep brown color with minimal surface leaching.

### POWDER COATED ALUMINUM

Built from 5052-H32 marine grade aluminum alloy, Forma walls and modular planters resist corrosion and weight approximately 40% as much as steel. Products are made from 25-85%+ recycled content and fully recyclable. Finish steps include abrasive sanding, phosphate treatment, primer and/or powder top coat.

### POWDER COATED STEEL

Built from 36 mild steel, Forma walls and modular planters are built to withstand the most demanding conditions. Products are made from 25-85%+ recycled content and fully recyclable. Finish steps include media blasting, phosphate treatment, primer and powder top coat.

## Styles

### TOP

**Straight Side** - For a simple and minimal look with a lowered backer for added rigidity.

**Top Flange** - 2"W x 1.5"H formed top for a more substantial aesthetic.



**Straight Side**



**Top flange**

### BASE

**Anchored** - Ideal for low profile and smaller spaces without sacrificing structure. Saves base material while allowing for quick installation on concrete curb.

**Freestanding** - Works well for on-structure or on grade applications. Can be set on variety of structurally sound substrates. Ideal for taller walls, larger planting areas, and as edge restraints.



**Anchored**



**Freestanding**



**Marketed by Sika Corporation - Contact for further DETAILS and PRICING**

100 Dan Road, Canton, MA 02021 • (800) 877-6125

usa.sika.com/roofing • hydrotechusa.com



## Options

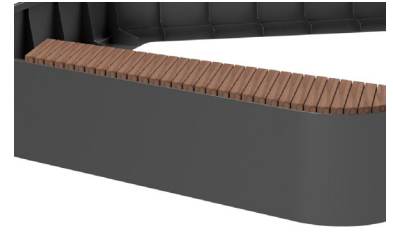
### BENCH

Cantilevered bench options in standard and custom sizes or lengths available.

Bench Toppers available in standard or custom shapes and sizes.



**Cantilevered**



**Bench Topper**

### LIGHTING

Wall Mount lights or housings located as needed.

LED Strip lighting under benches, toe kicks or front wall wash lighting.



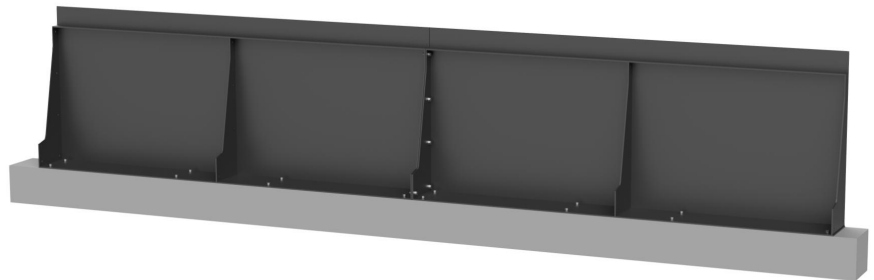
**Wall Wash**



**Toe Kick with LED lighting**

## Installation

Detailed assembly layouts, installation instructions, and connection hardware supplied. Sealant suggested for watertight joints.



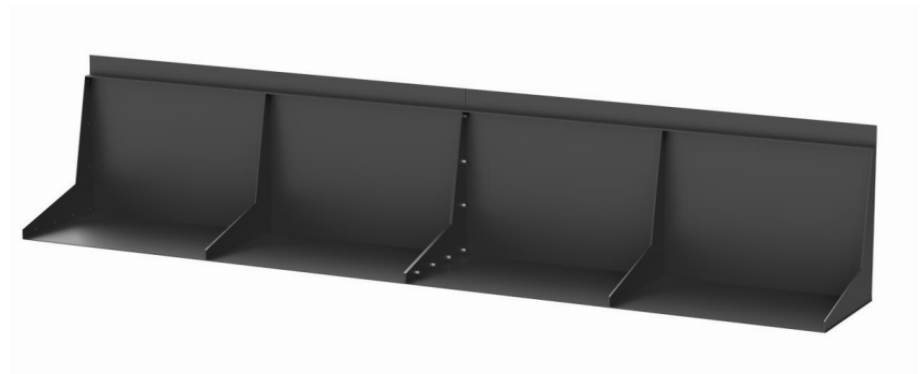
**Anchored**

### ANCHORED

To be set on concrete curb or slab with wedge or epoxied anchors. Ideal for cantilevered bench options.

### FREESTANDING

Can be set on foam, concrete slab, pavers, or compacted gravel base. Wider base that does not need to be secured to substrate. Benches can be installed in this configuration.



**Freestanding**



**Marketed by Sika Corporation - Contact for further DETAILS and PRICING**

100 Dan Road, Canton, MA 02021 • (800) 877-6125  
[usa.sika.com/roofing](http://usa.sika.com/roofing) • [hydrotechusa.com](http://hydrotechusa.com)

