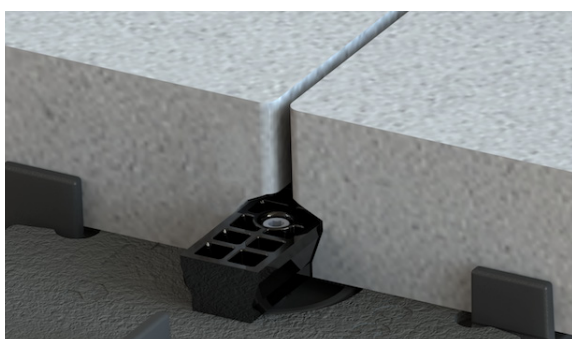


To meet the demands of high wind environments, the Unilock SkyView Wind Uplift System keeps roof top paving surfaces secure, even in severe weather conditions. The system consists of three parts; SkyView Wind Uplift Slabs, SkyView Wind Uplift Kit, and SkyView Pedestals. When combined, these components create a rafted paving surface with an invisible tie-down mechanism that resists wind uplift pressures without compromising project aesthetics.

1 | Wind Uplift Slabs

SkyView Wind Uplift Slabs feature a kerfed undercut that spans the length of two opposing sides, allowing for the Keyway Lockdown Bar to slide in and secure them in place. These 24" x 24" slabs are available in a variety of finishes and colors, offering flexibility in design for areas where wind is a concern.



- ✓ 2" thickness for reduced weight, easier material handling and decreased shipping costs
- ✓ Continuous undercut channel enhances design flexibility, allowing for the installation of running bond patterns at any offset
- ✓ When on-site cutting is required, the functionality of the system remains without the need for additional fabrication to the slab
- ✓ Available with EasyClean™ Stain Resistance Technology

AVAILABLE SIZES

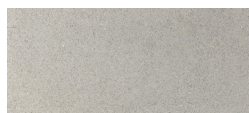


L: 24", W: 36", H: 2"
L: 604.8, W: 909.6, H: 51mm
False Joint at 24"



L: 24", W: 24", H: 2"
L: 604.8, W: 604.8, H: 51mm

AVAILABLE FINISHES



PREMIER



REVELA™

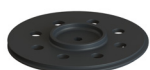


CLASSIC
THRUMIX

2 | Wind Uplift Kit

The Wind Uplift Kit includes a Puck, Keyway Lockdown Bar, and Screw, which can be easily added to SkyView Pedestals. Together, they form a tie-down mechanism designed to work seamlessly with SkyView Wind Uplift Slabs.

- ✓ Invisible tie-down
- ✓ Removable components to allow for easy access to utilities and structures beneath the surface



PUCK
D: 4.42", H: 0.7"
D: 112.3, H: 17.8mm



KEYWAY LOCKDOWN BAR
L: 2.55", W: 1", H: 0.67"
L: 64.8, W: 25.4, H: 17mm



SCREW
L: 2" (50.8mm)

L: Length, W: Width, D: Outside Diameter, H: Height



Marketed by Sika Corporation - Contact for further DETAILS and PRICING

100 Dan Road, Canton, MA 02021 • (800) 877-6125
usa.sika.com/roofing • hydrotechusa.com



SKYVIEW WIND UPLIFT SYSTEM



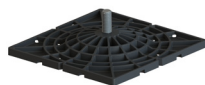
3 | SkyView Pedestals

Unilock SkyView Pedestals are patent pending, fully adjustable structural supports for elevating paving materials. Our pedestals ensure unmatched flexibility, ease of installation and durability.



- ✓ Adjustable heights from ½" to 31"
- ✓ Slope compensation up to 6%
- ✓ Orbital socket for ease of leveling
- ✓ Large footprint to provide stability
- ✓ Consistent slab alignment with ⅜" spacer tabs
- ✓ Resistant to water, mold, and freeze/thaw cycles

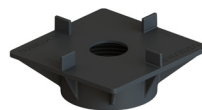
PEDESTAL COMPONENTS



BASE
L: 7", W: 7", H: 0.38"
L: 177.8, W: 177.8, H: 9.6mm



WASHER
D: 3"
D: 76.2mm



TOP
L: 7", W: 7", H: 2.25"
L: 177.8, W: 177.8, H: 57.2mm



5" CORE
D: 4.43", H: 5"
D: 112.5, H: 127mm

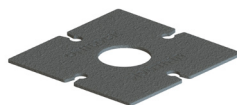


10" CORE
D: 4.43", H: 10"
D: 112.5, H: 254mm

PEDESTAL STANDARD KIT



COLLAR
D: 4.75", H: 2.3"
D: 120.7, H: 58.4mm



TOP PAD (optional)
L: 6.5", W: 6.5", H: 0.13"
L: 165.1, W: 165.1, H: 3.3mm



**½" LOW-PROFILE
WIND UPLIFT WAFFLE**
L: 7", W: 7", H: 0.5"



**1" LOW-PROFILE
WIND UPLIFT WAFFLE**
L: 7", W: 7", H: 1"

COMPONENTS FOR LOW PROFILE APPLICATIONS

L: Length, W: Width, D: Outside Diameter, H: Height
Height measurement for Top, ½" Waffle and 1" Waffle do not include the height of the spacer tabs.



Marketed by Sika Corporation - Contact for further DETAILS and PRICING

100 Dan Road, Canton, MA 02021 • (800) 877-6125
usa.sika.com/roofing • hydrotechusa.com

