

GENERAL DESCRIPTION

Hanover Rockcurb, as marketed by American Hydrotech, Inc. is high density, pressed concrete precast curbing pieces. Rockcurb is available with a battered or bullnose edge and in the standard Hanover Tudor finish and colors.

BASIC USE

Hanover Rockcurb precast curbing is designed to be used as transition units between the softscape of a Hydrotech Garden Roof® Assembly and the hardscape of an Ultimate® Assembly or anywhere precast curbs are desired.

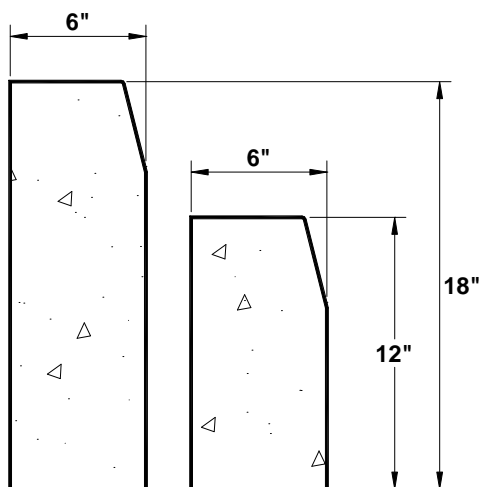
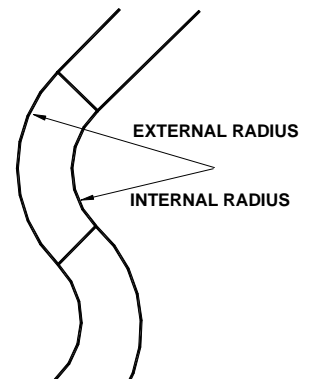
SIZES

Hanover Rockcurb is available 8, 12 or 18 inches high, 6 inches thick/wide, and 36 inches long.

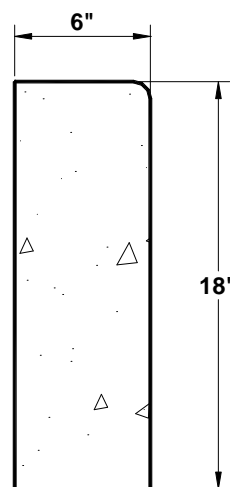
The 18 inch high Rockcurb is available with both battered and bullnose edges. The 12 inch is available with a battered edge only. The 8 inch is available with a slightly rounded edge only.

Rockcurb is also available in a limited number of radius sections as follows:

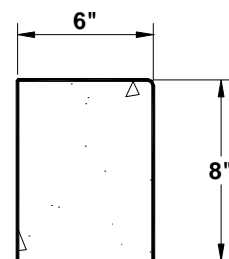
- 12 inch high: 5, 10, 15, 20, and 30 foot external radius lengths
- 18 inch high: 3, 6, 8, 10, 15, 20, and 30 foot external radius lengths
6, 15, 20, and 30 foot internal radius lengths



BATTERED EDGE



BULLNOSE EDGE



ROUNDED EDGE