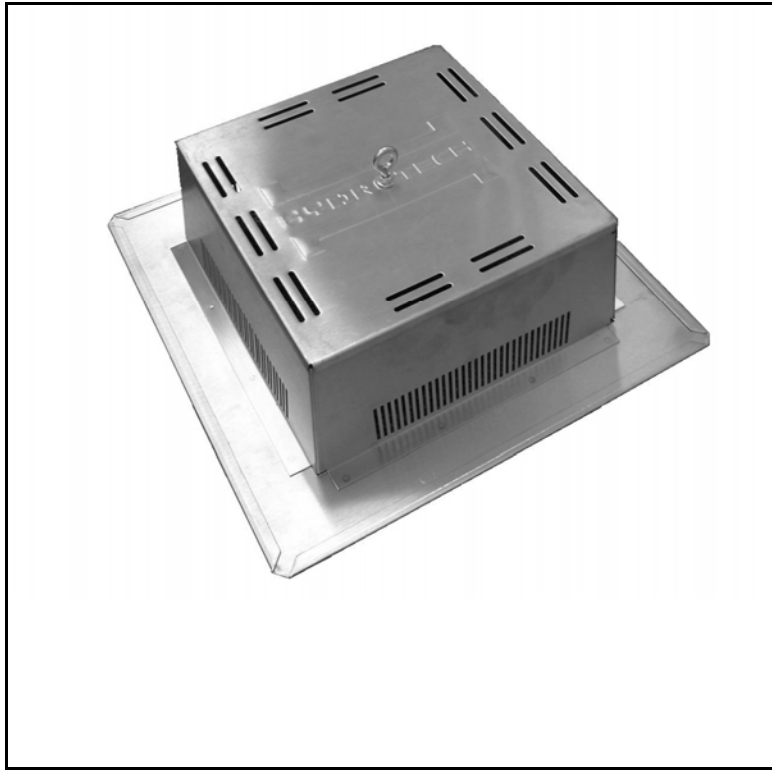




GARDEN ROOF® INSPECTION CHAMBER

PRODUCT DATA SHEET



GENERAL DESCRIPTION

Inspection Chambers are 18 gauge stainless steel, over-drain inspection boxes, with perforated sides and removable lids. Extensions are available to increase the height for deeper growing media applications.

BASIC USE

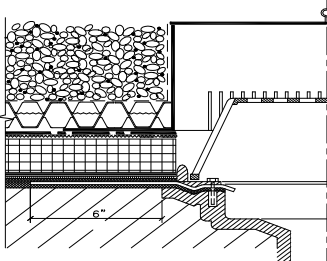
Inspection Chambers are specifically designed to be installed over the deck drains, prior to the installation of subsequent landscaping materials (i.e., soil) to allow for maintenance access to the drains.

TECHNICAL DATA

SIZE:	Chamber dimension: 11 in. X 11 in. (28 cm X 28 cm) w/4 in. flanges or 18 in. X 18 in. (45.7 cm X 45.7 cm) w/4 in. flanges
HEIGHT:	4 3/4 in. (12cm)
EXTENSIONS :	1 in. (2.5 cm); 3 in. (7.6 cm); 8 1/2 in. (21.6 cm)
WEIGHT:	7 lb. chamber & lid add 1, 2, and 3 lb. respectively for each extension

INSTALLATION

- The inspection chamber may be installed directly on the Gardendrain, the STYROFOAM® insulation or directly over the root barrier protection for the MM 6125EV-FR® membrane.
- Vegetation-free zones (i.e., gravel) are typically required around all inspection chambers.
- When deeper soil depths are encountered, the inspection chambers base element and lid can be combined with extension elements which fit over the sides of the base element.



American Hydrotech, Inc.

303 East Ohio Street, Chicago, IL 60611 * (312)337-4998 * (312)661-0731 fax * 01/10

www.hydrotechusa.com