



Monolithic Membrane 6125[®]



INTERNATIONAL EDITION

RAISING THE GLOBAL STANDARD

GLOBAL EXPERIENCE

Hydrotech's Monolithic Membrane 6125®, the original rubberized asphalt membrane, has been entrusted for over 45 years with keeping high profile structures around the globe watertight. With more than one-half billion square feet of MM6125® installed on projects in over 36 countries, the product is supported by an extensive network of agents and installers.

MONOLITHIC MEMBRANE 6125® PERFORMANCE

Thermoplastic Material - one component, 100% solids, no solvent, no VOC, no cure time. A monolithic high performance membrane applied with no seams or laps. Fully bonded to the deck, which restricts lateral water movement between the deck and membrane.

Dead Level Application - perfect solution for flat roofing. No slope is required for draining and it can withstand submersed water conditions continuously, making it the perfect membrane for flat roofs, water features, pools and green roofs.

Sustainable Product - MM6125®EV can be formulated with up to 25% post-consumer recycled content. Other tenets of sustainability include: in-field product longevity, recycled packaging, encapsulated meltable film wrap, long shelf life and lower heating temperature and energy consumption - reducing the product's carbon footprint impact on the planet.

Superior Formulation - MM6125 is manufactured in a certified ISO 9001:2000 facility and carries worldwide approvals such as CE Mark (European Technical Approval ETA-05/0152), REACH compliant, China Product Approval (Jin Chai), Poland Product Approval (ITB) and Underwriter's Laboratories Canada (ULC). The membrane can also contribute toward LEED points on a project. MM6125EV is formulated with inert clay fillers making it resistant to acids (fertilizers, building washes, acid rain, etc.), alkali, methane and numerous waste.

Adhesion/Cohesive Strength - toughness and tenacity ratio means excellent adhesion to substrate and cohesive strength. Superb elongation and low temperature flexibility ensure the membrane does not become brittle.

Cold Weather Applications - can be applied to 0°F (-18°C) and is unaffected by rain or snow conditions immediately after installation.



The Gate DFC, Dubai - United Arab Emirates



Shanghai Grand Theatre, Shanghai - China



Royal Bank of Scotland, Edinburgh - Scotland

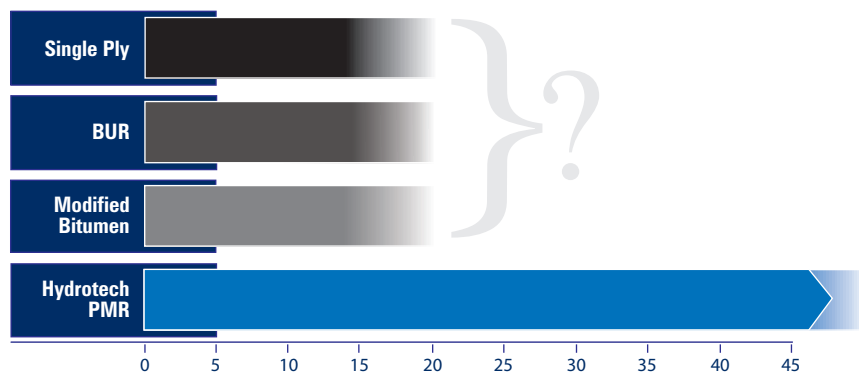
LIFE CYCLE SUSTAINABILITY

Monolithic Membrane 6125 in a protected assembly maximizes the lifecycle benefit to an owner well beyond other options. Compare for yourself and see the clear difference.

Costs that must be considered are: Initial Cost, Maintenance / Repair and Replacement Cost.

MM6125EV is more economical to install, lasts longer and has earned the BBA's highest rating, the BBA Agrément Approval from the United Kingdom as ***"an effective barrier to the transmission of water... for the design life of the roof structure."***

- Agrément No. 90/2431 & 90/2432.



MM6125, the waterproofing of choice when quality is a requirement, not an option.

TYPICAL APPLICATIONS



Taishin Bank Tower, Taipei - Taiwan



US Embassy, Abidjan - Ivory Coast



Lei Yue Mun Project, Hong Kong - China

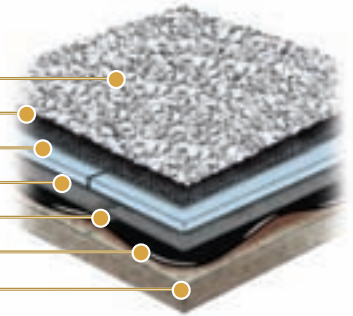
Additional Products

- Hydrodrain® Drainage Composites
- Gardendrain® Garden Roof® Components
- Hydrotech Architectural and Ballast Pavers
- STYROFOAM® Insulation
- LM6090 and MM7800 Cold-Applied Membrane Products
- VM75 Vertical Sheet Membrane Products

Protected Membrane Roof

- Stone Ballast
- Stone Filter Fabric
- STYROFOAM®
- Hydroflex®
- Monolithic Membrane 6125® (5.5 mm)
- Surface Conditioner
- Approved Substrate

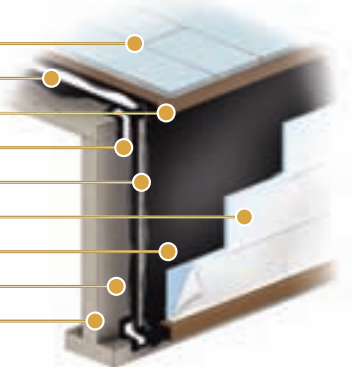
(typical components depicted)



Vertical Waterproofing

- STYROFOAM®
- Monolithic Membrane 6125® (5.5 mm)
- Hydroflex®
- Flex Flash F
- Flex Flash FV
- STYROFOAM® (board, fanfold or Thermaflo™)
- Monolithic Membrane 6125® (5.5 mm)
- Surface Conditioner
- Approved Substrate

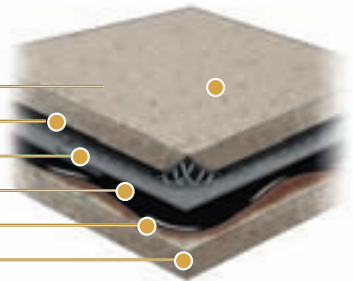
(typical components depicted)



Split Slab Construction

- Concrete Topping Slab
- Hydrodrain® 300
- Hydroflex®
- Monolithic Membrane 6125® (5.5 mm)
- Surface Conditioner
- Approved Substrate

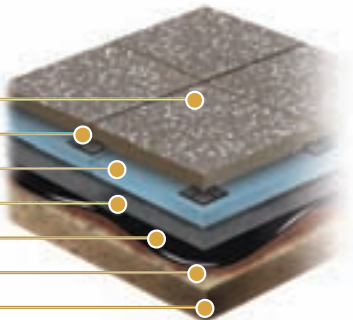
(typical components depicted)



Ultimate Assembly

- Architectural Pavers
- Tabs
- STYROFOAM®
- Hydroflex®
- Monolithic Membrane 6125® (5.5 mm)
- Surface Conditioner
- Approved Substrate

(typical components depicted)

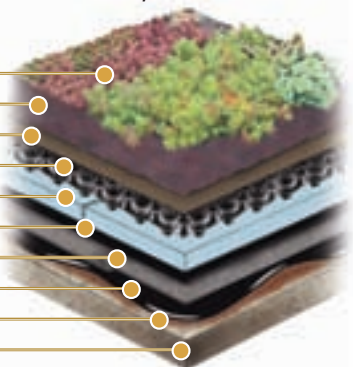


Garden Roof® (Extensive, Intensive or Semi-Intensive)

Extensive vegetation and components depicted

- Vegetation
- LiteTop® Growing Media
- Systemfilter
- Gardendrain® GR15® / GR30® / GR50®
- STYROFOAM® (optional)
- Root Stop
- Hydroflex®
- Monolithic Membrane 6125®EV (5.5 mm)
- Surface Conditioner
- Approved Substrate

(typical components depicted)



* For additional Hydrotech ballasting options, including architectural pavers, please contact us



Złote Tarasy, Warsaw - Poland



The Ritz-Carlton, Grand Cayman



NBO Chancery, Berlin - Germany



International Airport, Abu Dhabi - United Arab Emirates

Cover Photo – New Providence Wharf, London – UK

Much has changed in our industry since I began my career over 40 years ago, but the values that underpin our success have not: integrity, quality, trust, accountability and relationships based on respect for each other. At American Hydrotech we have talented and energetic people who have a passion for their work and who are committed to providing value at a fair price.

The same standard of excellence that has driven our success in North America also applies to our international projects. From design and development through specifications and installation, Hydrotech will provide technical support to the architects, engineers, owners, consultants and contractors around the globe, as we have on thousands of projects in 36 countries for nearly 50 years.

Our thanks to all of you who have supported us over this great journey. Our goal is to continue to serve our customers with creativity and consistency to generate growth across all channels. May we assist you on your next project?

Please give us a call.


David F. Spalding
President

UNITED STATES

American Hydrotech Inc.

303 East Ohio Street, Chicago, Illinois 60611-3387
800.877.6125 312.337.4998 FAX 312.661.0731

CANADA

Hydrotech Membrane Corporation

10,951 Parkway, Ville D'Anjou, Quebec H1J 1S1
800.361.8924 514.353.6000 FAX 514.354.6649

WORLDWIDE

World Wide Web: www.hydrotechusa.com

The contents and methods described herein are the intellectual property of American Hydrotech, Inc.. The information is based on data and knowledge considered to be true and correct at the time of publication and is offered for the user's consideration, investigation and verification. The information is subject to change without notice. The determination of suitability and fitness of the products and the application described herein for a particular purpose are the sole responsibility of the user. Please read all statements, recommendations and suggestions in conjunction with the conditions of sale which apply to all goods sold by American Hydrotech, Inc. for the United States and abroad, or Hydrotech Membrane corporation for Canada, including the express disclaimers by each company of the implied warranties of merchantability or fitness for a particular purpose.

© 2009 AMERICAN HYDROTECH INC.

2009-BR-1-INT-DY



STYROFOAM is a registered trademark of The Dow Chemical Company

The management system governing the manufacture of MM6125 is ISO 9001:2000 certified