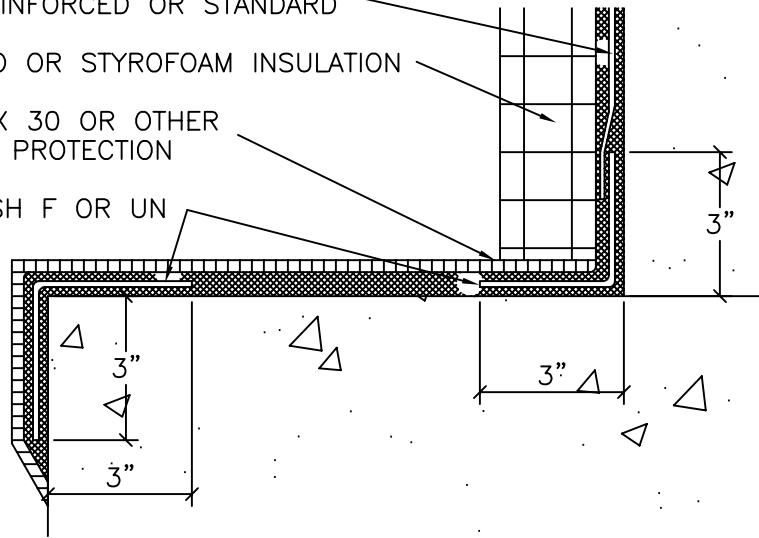


MONOLITHIC MEMBRANE 6125
FABRIC REINFORCED OR STANDARD

THERMAFLO OR STYROFOAM INSULATION

HYDROFLEX 30 OR OTHER
APPROVED PROTECTION

FLEX-FLASH F OR UN

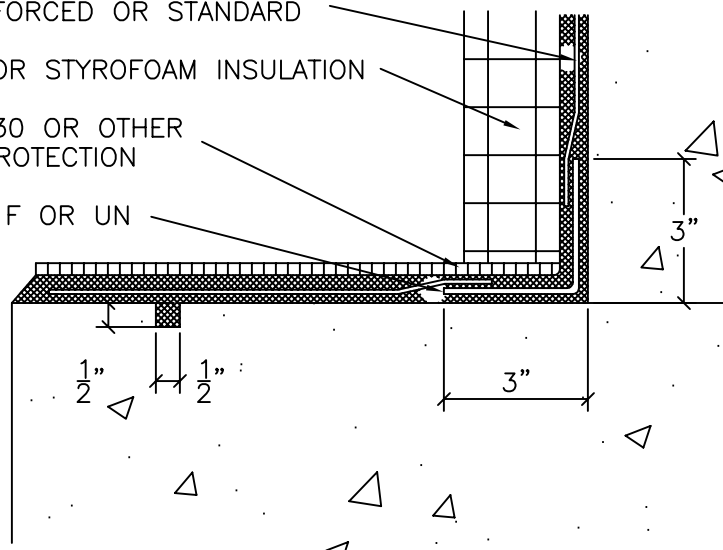


MONOLITHIC MEMBRANE 6125
FABRIC REINFORCED OR STANDARD

THERMAFLO OR STYROFOAM INSULATION

HYDROFLEX 30 OR OTHER
APPROVED PROTECTION

FLEX-FLASH F OR UN



NOTES: WHEN FOUNDATION WALLS ARE CONSTRUCTED OF CONCRETE BLOCK (CMU),
MM 6125 MUST BE INSTALLED IN FABRIC REINFORCED MEMBRANE ASSEMBLY.

WHEN THE FACE OF THE FOOTING IS NOT ACCESSIBLE, A 1/2" X 1/2"
SHOULD BE CUT/FORMED INTO THE FOOTING TO PROVIDE A WATER STOP
FOR THE MEMBRANE.



Monolithic
Membrane
6125-FR
WATERPROOFING SYSTEMS

AMERICAN HYDROTECH, INC.

TYPICAL FOUNDATION WALL
DETAILING AT FOOTING

NO SCALE

W-11C