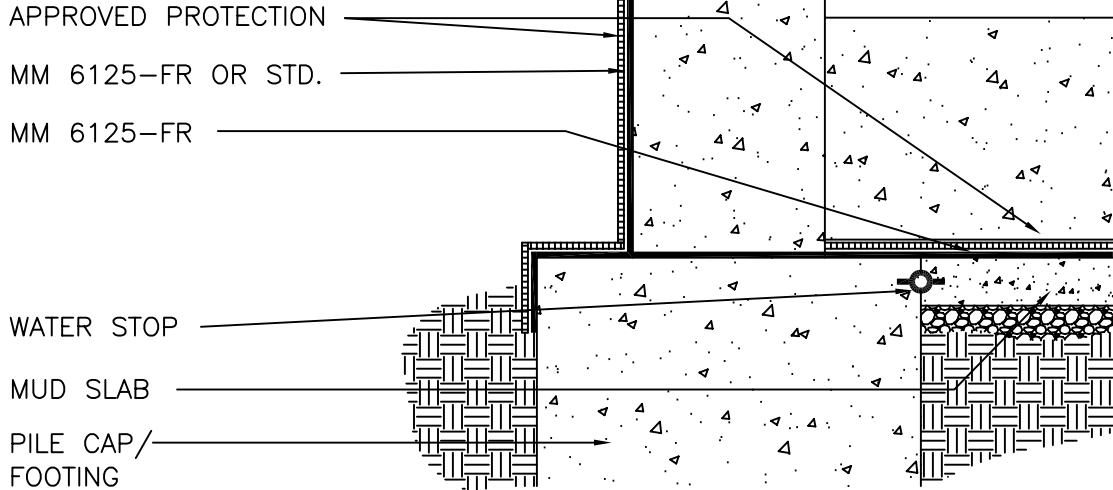
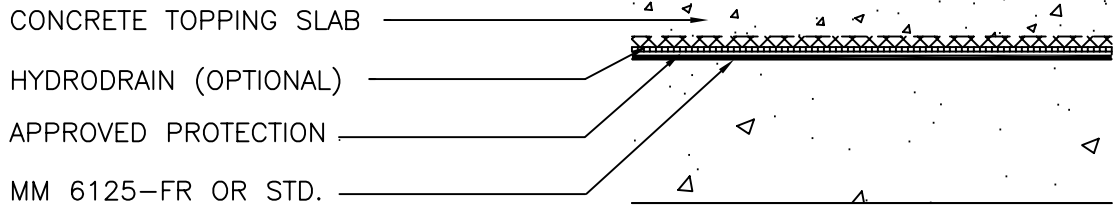


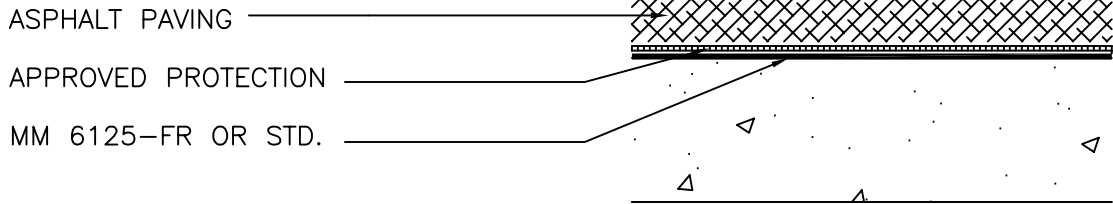
FOUNDATIONS & MUD SLABS



BETWEEN SLAB



UNDER ASPHALT PAVING



NOTES: WHEN DOW STYROFOAM IS INSTALLED DIRECTLY UNDER AN IMPERVIOUS SURFACE (i.e., TOPPING SLAB, SETTING BED, ETC.) AN AIR LAYER (HYDRODRAIN) MUST BE INSTALLED ON TOP OF THE FOAM.

IF HYDRODRAIN OR INSULATION IS TO BE INSTALLED UNDER ASPHALT PAVEMENT A COMPACTED STONE BASE IS REQUIRED. CONTACT HYDROTECH FOR ADDITIONAL SUGGESTIONS REGARDING PLACEMENT OF ASPHALT PAVEMENT DIRECTLY OVER MM 6125.



Monolithic Membrane  
6125-FR  
WATERPROOFING SYSTEMS

AMERICAN HYDROTECH, INC.

TYPICAL APPLICATIONS

NO SCALE

W-2A